



# Cannabinoid Analysis Report

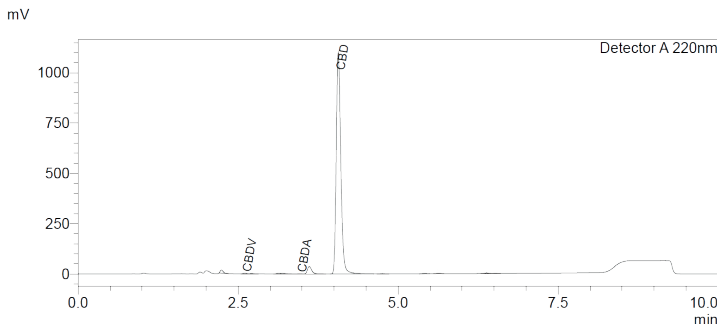
## Analytical Test Parameters

Sample Name	Access CBD Berry - 1200mg	Method	HPLC
Date-Time	27-May-2020 15:29:59	Test Type	Cannabinoids
Client Name	Canabidol	Batch Code	8743951

## Results

Cannabinoid	% (w/w)	Content in Sample (mg)
Cannabidiol (CBD)	4.482	1263.92400
Cannabidiolic acid (CBDA)	< 0.01	Not Detected
Cannabidivarin (CBDV)	< 0.01	Not Detected
Cannabigerol (CBG)	< 0.01	Not Detected
Cannabigerolic Acid (CBGa)	< 0.01	Not Detected
Cannabinol (CBN)	< 0.01	Not Detected
Tetrahydrocannabinolic Acid (THCa)	< 0.01	Not Detected
$\Delta$ -9-Tetrahydrocannabinol ( $\Delta$ -9-THC)	< 0.01	Not Detected
$\Delta$ -8-Tetrahydrocannabinol ( $\Delta$ -8-THC)	< 0.01	Not Detected
Cannabichromene (CBC)	< 0.01	Not Detected

## Chromatogram



This report and all information herein has been confirmed by the authorised person named below. The report should not be reproduced, except in its entirety, without written consent of the laboratory. Results are applicable only for the samples tested and the specific tests conducted. All tests are carried out under strict laboratory protocols, guidelines and supervision.

Authorised by:

*Joshua Cowie*

Joshua Cowie, CEO