

Chemical Content Analysis

| | |
|-------------|--------------------------------------|
| Client | Vilosophy |
| Product | V&YOU Berry Calm CBD Drops 400mg (3) |
| Volume | 10ml |
| Batch No. | 11801A |
| Lab ID | CBD0478 |
| Date | 29.10.2020 |
| Analysis by | Lawrence Theobald |
| Approved by | Mark Portsmouth |

Method Summary:

0.5g of sample was measured on a balance and extracted with Isopropyl Alcohol to give a sample at 25 mg/ml. This was then diluted further in Methanol

The sample was analysed on an Agilent HPLC with a DAD detector. The system was calibrated using standard solutions of eleven Cannabinoids. Cannabinoid concentrations in the sample were determined using the relevant calibration lines.

The results are presented in Table 1 and Figure 1 below.

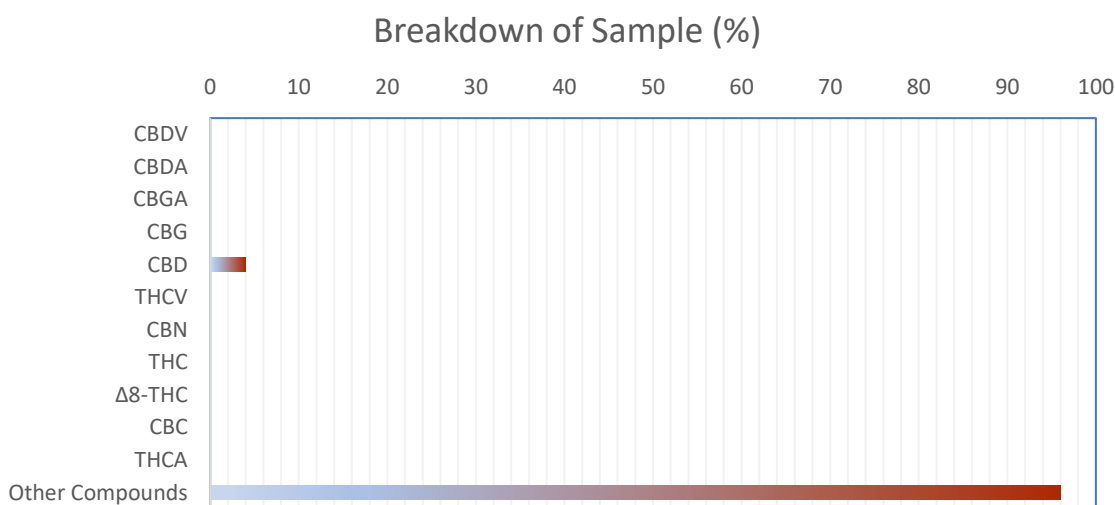
PASSED

Results

| Cannabinoid Compound (Abbreviation) | CAS Number | LoQ (µg/ml) | Target Concentration (mg/ml) | Measured Concentration (mg/ml) | PASS/FAIL |
|---------------------------------------|------------|-------------|------------------------------|--------------------------------|-----------|
| Cannabidiarin (CBDV) | 24274-48-4 | 0.1 | No Target | 0.1516 | N/A |
| Cannabidiolic Acid (CBDA) | 1244-58-2 | 0.1 | No Target | 0.1084 | N/A |
| Cannabigerolic Acid (CBGA) | 25555-57-1 | 0.1 | No Target | BQL | N/A |
| Cannabigerol (CBG) | 25654-31-3 | 0.1 | No Target | BQL | N/A |
| Cannabidiol (CBD) | 13956-29-1 | 0.1 | 40 | 39.3164 | PASS |
| Tetrahydrocannabivarin (THCV) | 1972-08-3 | 0.1 | Legal Limit | BQL | PASS |
| Cannabinol (CBN) | 521-35-7 | 0.1 | Legal Limit | BQL | PASS |
| Δ9-Tetrahydrocannabinol (THC) | 1972-08-3 | 0.1 | Legal Limit | BQL | PASS |
| Δ8-Tetrahydrocannabinol (Δ8-THC) | 5957-75-5 | 0.1 | Legal Limit | BQL | PASS |
| Cannabichromene (CBC) | 20675-51-8 | 0.2 | No Target | BQL | N/A |
| Δ9-Tetrahydrocannabinolic Acid (THCA) | 23978-85-0 | 0.2 | Legal Limit | BQL | PASS |

Table 1- Results. LOQ- Limit of Quantitation. BQL- Below Quantitation Limit

Figure 1- Proportion of sample breakdown



Comments

Sample (3)- This sample was taken at the end of the production run

Acceptance Criteria- All prohibited Cannabinoids below legal limits, CBD and CBDA content ±5% of expected dosage. 400mg of CBD in a 10ml container is equivalent to 40 mg/ml

Limits- CBN- 1mg per container, Δ8-THC- 1mg per container, THCV- 1mg per container
THC and THCA- 1mg per container combined

Summary- All prohibited Cannabinoids are below legal limits and CBD is within acceptance criteria